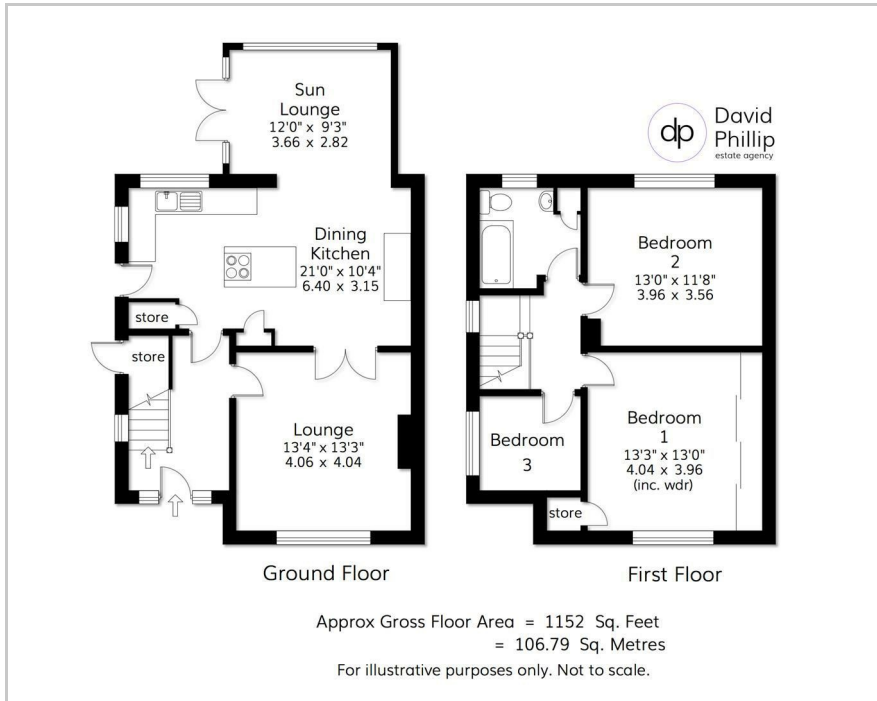




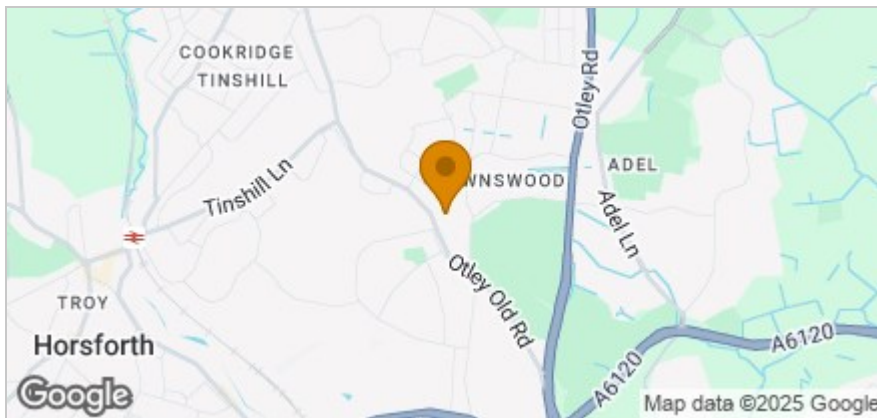
21 New Adel Gardens, Leeds, LS16 6BD
Price Guide £425,000



Floor Plan



Area Map



Accommodation

- An immaculately Presented Semi-Detached Family House
- Offering Three Bedrooms and Flexible Spacious Ground Floor Space
- Stunning Contemporary Family Kitchen and Adjoining Sun Lounge
- Delightful Private Southerly Facing Rear Garden of a Good Size
- Enjoying an Exclusive Quiet Head of Cul-de-Sac Location
- Garage, Shed, Summer House with Power and Ample Parking
- Awaiting EPC
- Leeds City Council Tax Band D

Viewing

Please contact our David Phillip Estate Agents Office on 01134 676 400 if you wish to arrange a viewing appointment for this property or require further information.

Energy Efficiency Graph



These particulars, whilst believed to be accurate are set out as a general outline only for guidance and do not constitute any part of an offer or contract. Intending purchasers should not rely on them as statements of representation of fact, but must satisfy themselves by inspection or otherwise as to their accuracy. No person in this firm's employment has the authority to make or give any representation or warranty in respect of the property.